

SWISSRAILING

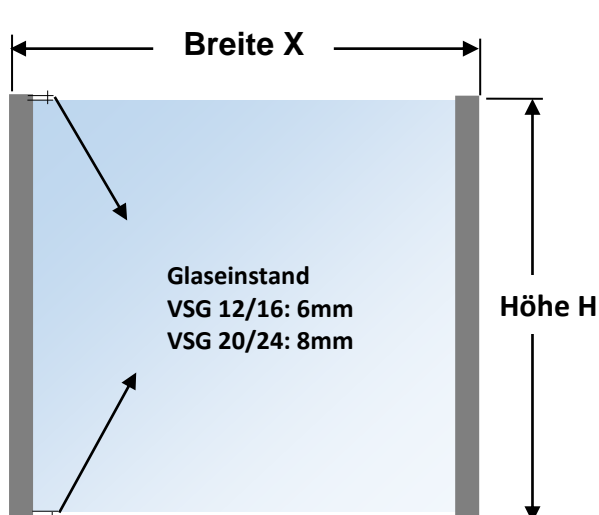
two sided SR3 (Montage an Stahlprofilen oder Geländerpfosten)



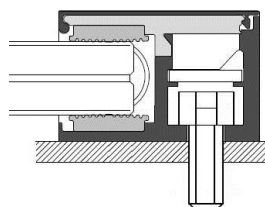
Firma:

KOM:

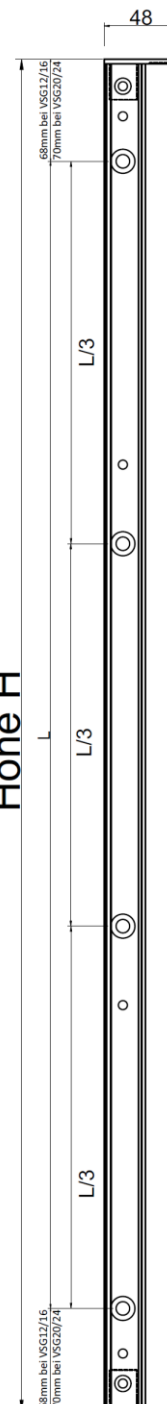
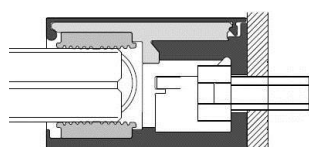
Lt.:



frontale Montage (V)



seitliche Montage (H)



Pos:	Stück:	Breite: X (mm)	Höhe: H (mm)	Montage		Beschichtung Profil und Endkappe		
				H	V	RAL 7016	RAL 9016	Sonder- farbe TYP:

Inkl. Kantenschutz: Standard Edelstahl gebürstet

Bestelldatum: _____

Unterschrift _____